

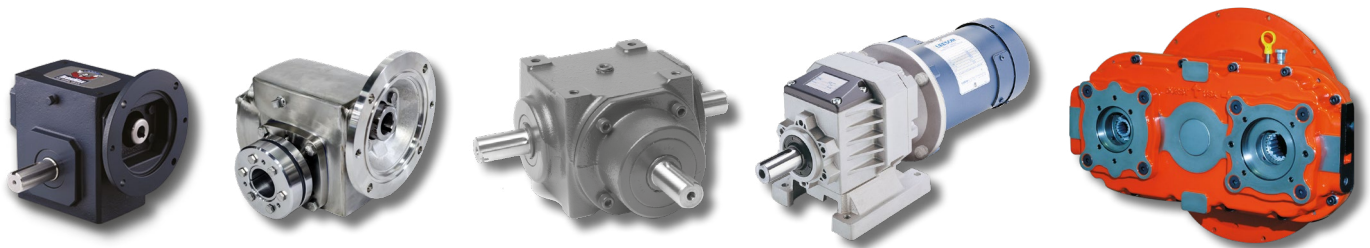
Browning[®]

DURST[®]

GROVE GEAR[®]



ENCLOSED GEARING SOLUTIONS



RegalRexnord[™]



A TRADITION OF GEARING LEADERSHIP

Regal Rexnord provides the appropriate gearbox for a variety of applications.

We provide a wide array of gear types, shaft configurations, ratios, housing materials and mounting methods including worm gear, bevel, and helical gear boxes to provide solutions for many application challenges.

These gear boxes, whether you refer to them as gear reducers, gear drives or speed reducers, are found in nearly every industry and market, touching various points of manufacturing, processing, packaging and moving material or products.

Standard, Modified Standard or Custom Gear Drives from Regal Rexnord.

See what Regal Rexnord can do for you!

Browning[®]

GROVE GEAR[®]

DURST[®]

 **HUBCITY**[®]

MODIFIED STANDARD / CUSTOM SOLUTIONS

Need something not in the catalog?

- ▶ Regal Rexnord can deliver the appropriate gearbox for a variety of OEM applications
- ▶ Bundled gear + motor, flexibility in gear types, shaft configurations, ratios, housing materials and mounting methods
- ▶ Concentration from 100 inch pounds to 10,000 inch pounds of torque



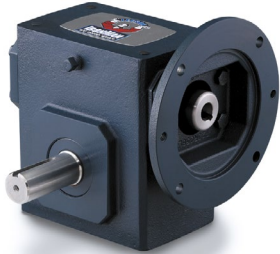
Design and engineering support

Manufacturing

Quality and testing

STANDARD GEARING

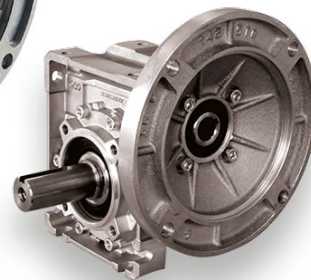
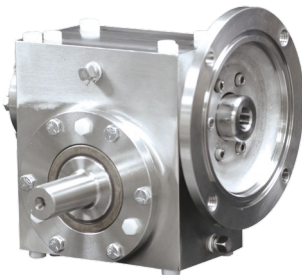
GROVE GEAR® WORM GEAR REDUCERS



Ironman® & NH Series Cast Iron - Bravo® Quadro® & EL-Series Aluminum, and Washguard®

All Stainless Steel

- ▶ Center distances 1.33" to 10"
- ▶ Ratios 5:1 To 3600:1
- ▶ Common industry dimensions
- ▶ Best in class availability

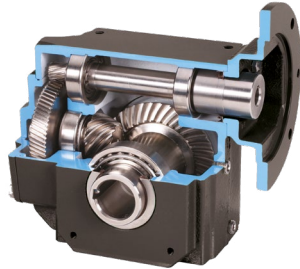


Grove Gear® Premium
Washguard® All Stainless
IP69K Certified

RIGHT ANGLE

STANDARD GEARING

HUB CITY® HIGH EFFICIENCY RIGHT ANGLE HERA® GEAR DRIVES



Cast Iron & Stainless

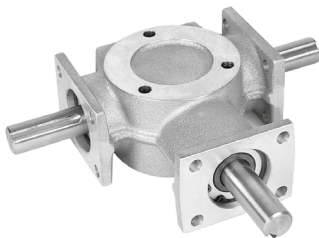
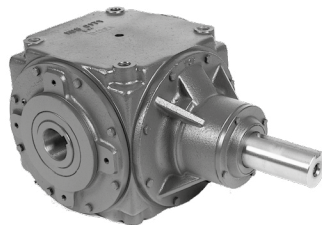
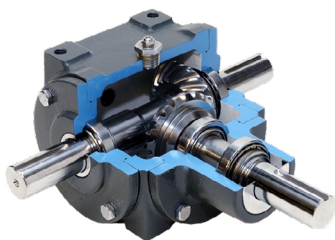
- ▶ 90% efficient gearing
- ▶ Modular kits allow interchangeability with worm gear reducers
- ▶ Four HERA models can replace 12 sizes of worm gear drives
- ▶ HubLoc® Keyless Bushing System



Hub City® Stainless Steel
HERA® Gear Drives:
IP69K Certified



HUB CITY BEVEL GEAR DRIVES



- ▶ Large assortment of enclosed spiral or straight bevel gearing solutions
- ▶ Universal mounting for right angle transmission
- ▶ Cast Iron, Stainless and Aluminum

STANDARD GEARING

PARALLEL SHAFT GEARING UTILIZING HELICAL AND SPUR GEARS



Browning® Poweratio® 5000 Inline Helical

- ▶ Inline helical features high quality, precision components
- ▶ Dimensionally and mechanically interchangeable with many major brands
- ▶ Available in a wide variety of mounting arrangements and input options
- ▶ Foundation for modified standard units



Grove Gear® and Hub City® Ratio Multipliers

- ▶ Dual purpose design can be used as a stand-alone single reduction inline reducer or as a bolt-on to the input of any c-faced gear reducer to multiply overall reduction ratio
- ▶ Available in aluminum, cast iron or stainless steel



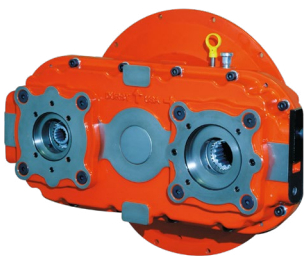
STANDARD GEARING

PARALLEL SHAFT GEARING UTILIZING HELICAL AND SPUR GEARS



Browning® TorqTaper Plus® Shaft Mount Reducers

- ▶ Patented TorqTaper Plus bushing can be installed on either the inboard or outboard side of sizes 107 through 315 reducers
- ▶ Available with CEMA screw conveyor drives



Durst® Pump Drives

- ▶ Modular design hydraulic pump drive solution that can be easily configured to meet your application needs
- ▶ Patented wet spline connection: Patent# 7,152,711
- ▶ Drop in replacements for most applications



Browning[®]

DURST[®]

GROVE GEAR[®]



Motion Control Solutions

Regal Rexnord

7120 New Buffington Road

Florence, KY 41042

Customer Service: 800-626-2120

Technical Service: 800-626-2093

CustomerService.PTSolutions@regalrexnord.com

regalrexnord.com

The proper selection and application of products and components, including assuring that the product is safe for its intended use, are the responsibility of the customer. To view our Application Considerations, please visit <https://www.regalrexnord.com/Application-Considerations>.

To view our Standard Terms and Conditions of Sale, please visit <https://www.regalrexnord.com/Terms-and-Conditions-of-Sale> (which may redirect to other website locations based on product family).

"Regal Rexnord" is not indicative of legal entity.

Regal Rexnord, Bravo, Browning, Durst, Grove Gear, Hera, Hub City, HubLoc, Ironman, Poweratio, Quadro, Torq Taper Plus, Washguard are trademarks of Regal Rexnord Corporation or one of its affiliated companies.

© 2021, 2022 Regal Rexnord Corporation, All Rights Reserved.

MCB22014E • Form# MB0109E

The Regal Rexnord logo consists of a stylized gear icon followed by the text "RegalRexnord" in a bold, sans-serif font, with a registered trademark symbol (®) to the right.